

Diatom Flora of the Low Countries

***Cyclostephanos tholiformis* E.F. Stoermer, H. Håkansson et E. Theriot 1987**

Morphology

Cells occur single or in short chains. Valves with raised or depressed center. Single rows of striae (fascicles) increasing towards valve mantle into two rows. One valve face fulcra near the center. Spines occur at every interfascicle. In the center a rosette occur.

Morphometrics

Source	Length (µm)	Width (µm)	Striae (in 10 µm)
Own data (n=0)			
Håkansson, H. 2002	7-12		12-13

Related species

C. invisitatus (M.H. Hohn et J. Hellerman) E. Theriot, E.F. Stoermer et H. Håkansson (flat central area, valve smaller 6-8 µm, no rosette occur in the center).

Distribution

Zoete Gracht Zierikzee, Vijver Parklaan Roosendaal, Brabantse Biesbosch, Kievitstocht, Watergang Armenweg Middelharnis, Gemaal polders lozende door het Oudeland, Gemaal Wittebrug, Sliedrechtse Biesbosch, Kuipersveer Oude Maas, Lobith ponton, Kampen (NL).

Ecology

In eutrophic (slow) running rivers with medium to high electrolyte content. Not yet well known because of taxonomical problems.

Ecological values

Indicator values (Van Dam et al. 1994)

R	H	N	O	S	T	M
5	2				5	

IPS

(Cemagref 1982)

IPS-S	IPS-V
2	1

Rott et al.1997, 1999

Rott SI s	Rott SI v	Rott TI s	Rott TI v

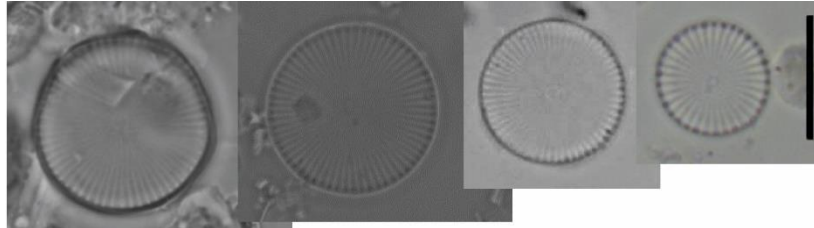
TDI

(Kelly & Whitton 1995)

TI-S	TI-V

Diatom Flora of the Low Countries

Remarks



The Netherlands

References:

Håkansson, H. (2002) A compilation and evaluation of species in the genera *Stephanodiscus*, *Cyclostephanos* and *Cyclotella* with a new genus in the family Stephanodiscacea.

Citation:

Mertens A. (2023) *Cyclostephanos tholiformis*. In Diatom Flora of the Low Countries. NVKD. Retrieved from <http://www.nvkd-diatom.nl/species>