

Diatom Flora of the Low Countries

Luticola saprophila Z. Levkov, D. Metzeltin et A. Pavlov 2013.

Basionym: *Luticola saprophila* Z. Levkov, D. Metzeltin et A. Pavlov 2013

Synonym: none

Morphology

Valves rhombic-lanceolate to rhombic-elliptic with weakly protracted and rounded ends. Axial area narrow, lanceolate, gradually widening towards the central area which is asymmetric, bow-tie shaped, bordered on both sides by 3-5 shortened striae composed of 1-2 areolae. Single isolated, slit-like, transapically elongated stigma in central area, located close to valve center. Proximal raphe endings deflected to opposite side of stigma. Distal raphe fissures hooked, first deflected towards same side as proximal endings and then hooked towards opposite side. Striae punctate, radiate near mid-valve, becoming strongly radiate towards apices.

Morphometrics

Source	Length (µm)	Width (µm)	Striae (in 10 µm)	Areolae (in one stria)
Own data (n=5)	16.9-24.6	6.9-8.3	20-21	6-7
Levkov et al. 2013	15.5-33.0	7.5-10.0	18-21	6-7

Related species

Luticola goeppertiana (Bleisch) Mann (valve shape linear-lanceolate to lanceolate, consistently narrower).

Distribution

Type location River Crna near the village Skochivir Macedonia;
Dieze, Oude Maasje, 's-Gravenmoerse vaart, Kuipersveer Oude Maas, Gouderak (NL); Itterbeek, Wimp, Jeker, Kanaal Gent-Oostende, Demer, Kottebeek, Zwartebeek, Dender, Melsenbeek, Abeek, Mark, Leie, Kanaal Kortrijk-Bossuit (B).

Ecology

Occurs in eusaprobic waters, mainly rivers and streams.

Ecological values

Indicator values (Van Dam et al. 1994)

R	H	N	O	S	T	M
4	2	3	3	5	5	

IPS
(Cemagref 1982)

IPS-S	IPS-V
1.8	2

Rott et al. 1997, 1999

Rott SI s	Rott SI v	Rott TI s	Rott TI v

TDI
(Kelly & Whitton 1995)

TI-S	TI-V

Diatom Flora of the Low Countries

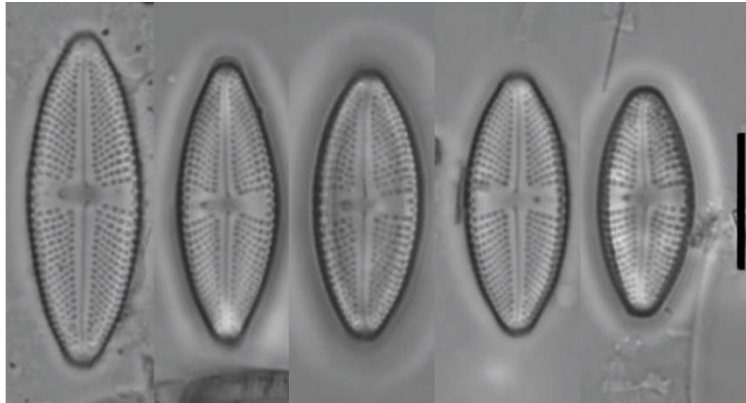
Remarks

The Netherlands

References:

Lange-Bertalot, H., G. Hofmann, M. Werum & M. Cantonati (2017) Freshwater Benthic Diatoms of Central Europe.

Levkov, Z., D. Metzeltin & A. Pavlov (2013) *Luticola* and *Luticolopsis*. Diatoms of



Europe 7.

Citation:

Mertens A. (2023) *Luticola saprophila*. In Diatom Flora of the Low Countries. NVKD. Retrieved from <http://www.nvkd-diatom.nl/species>