

Diatom Flora of the Low Countries

Conticribra guillardii (G.R. Hasle) A. Stachura-Suchoples et D.M. Williams 2009.

Synonym: *Thalassiosira guillardii* Hasle 1978

Morphology

Valves often weakly silicified. Valve structures are not resolved in LM. Strutted processes 0-3 on valve face, located one-third to one-half radius away from valve center. One ring of regularly spaced strutted processes on valve mantle. One labiate process taking the place of a strutted process.

Morphometrics

Source	Length (µm)	Width (µm)	Striae (in 10 µm)	Strutted processes (in 10 µm)
Own data (n=6)	9.1-10.4			8-10
Hasle 1978	4-14			7-8 (10)
Kipp et al. 2023	4-35			

Related species

Thalassiosira pseudonana Hasle & Heimdal (no strutted processes on valve face, ring with lower amount of strutted processes).

Distribution

Type location Helsinki Fölisörfjärd, Gulf of Finland. Valleikanaal Scherpenzeel, Kromme Rijn, Oudezijds Voorburgwal, Noorderamstelkanaal, Vondelpark, Erasmuspark, Lemstervaart, Sloot Schokland, Gemaal Wittebrug, Haven van Goedereede, Hoofdwatergang Boutweg, Gemaal Galathee aan Mariaweg, Gemaal Zuiderdieppolder, Kruising Armenweg Middelharnis, Gemaal Kilhaven, Gemaal Leeuw van Putten, Zuiderdiep bij Haringvliet, Wegsloot Steenweg, Gemaal De Volharding, Uitlaatwatergang polder Biert, Gemaal De Biersum, Hanendijk nabij gemaal N-Kraaijer, Watergang oude Stadse Zeedijk Haringvliet, Schutsluis te Hellevoetsluis, Gemaal Trouw, Kuipersveer Oude Maas, Gouderak, Brabantse Biesbosch, Terschellingerpolder Liessluis, Altjelt (NL); Brugse Reien, Provinciegeleed, Grote Laak-Grote Beek, Nieuwe Kale (B).

Ecology

Occurs in both fresh and brackish waters, indicating a wide salinity tolerance.

Ecological values

Indicator values (Van Dam et al. 1994)

R	H	N	O	S	T	M
4	5	1	1	2	5	1

Diatom Flora of the Low Countries

IPS
(Cemagref 1982)

IPS-S	IPS-V

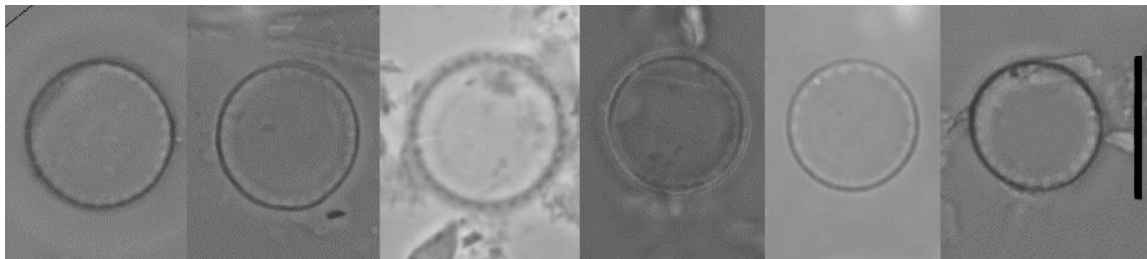
Rott et al.1997, 1999

Rott SI s	Rott SI v	Rott TI s	Rott TI v

TDI
(Kelly & Whitton 1995)

TI-S	TI-V

Remarks



The Netherlands

References:

Hasle, G.R. (1978) Some freshwater and brackish water species of the diatom genus *Thalassiosira* Cleve.

Stachura-Suchoples, K., and D.M. Williams (2009) Descriptions of *Conticribra tricircularis*.

Kipp, R.M., M. McCarthy, and A. Fusaro, 2023, *Conticribra guillardii* (Hasle) K. Stachura-Suchoples & D.M. Williams.

Citation:

Mertens A. (2023) *Conticribra guillardii*. In Diatom Flora of the Low Countries. NVKD. Retrieved from <http://www.nvkd-diatom.nl/species>