

Diatom Flora of the Low Countries

Navicula slesvicensis Grunow in Van Heurck 1880

Basionym : *Navicula slesvicensis* Grunow in Van Heurck 1880

Synonyms : *Navicula viridula* var. *slesvicensis* (Grunow) Van Heurck 1885

Morphology

Valves usually broadly lanceolate with convex margins and protracted, rostrate, broadly rounded apices. Raphe filiform. Proximal raphe endings almost straight to weakly deflected to secondary side. Central nodule weakly visible, symmetrical. Axial area rather narrow, linear. Central area small, rectangular, always bordered by several shortened striae. Striae strongly radiate, more parallel near the apices. Voigt fault well visible. Lineolae clearly discernible in LM.

Morphometrics

source	Length (µm)	Width (µm)	Striae (in 10 µm)	Areolae (in 10 µm)
Own data	32-50	9.5-10.5	9	c. 25
Krammer & Lange-Bertalot (1986)	25-60	8-11	8-9	c. 25
Lange-Bertalot (2001)	25-50	9-11	8-9	c. 25
Potapova (2009)	36-69	10-12.5	8-9	c. 25
Hofmann et al. (2011)	25-50	9-11	8-9	c. 25

Related species

Navicula rhynchocephala Kützing (more lanceolate outline, apices long, protracted)

Navicula viridula (Kützing) Ehrenberg (usually larger and broader, central area with more shortened striae, strongly developed asymmetrical central nodule)

Navicula viridicalalcis Lange-Bertalot (valve outline with parallel margins, strongly developed asymmetrical central nodule)

Distribution

Probably widespread

Ecology

Present in eutrophic water

Higher electrolyte contents

Alkaline rivers, often in brackish water

Ecological values

Indicator values (van Dam et al. 1994)

R	H	N	O	S	T	M
4	3	2	2	2	5	3

IPS

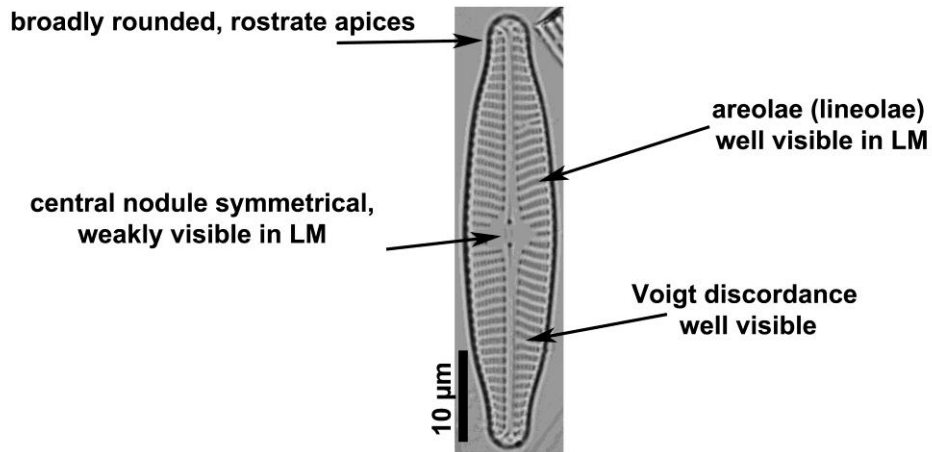
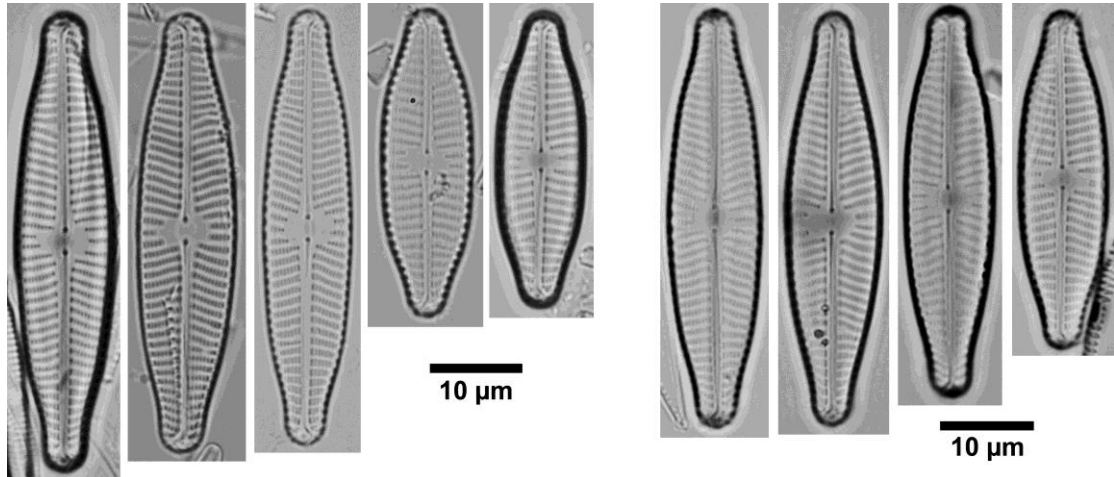
IPS-V	IPS-I
3	3

TI-index

TI-V	TI-S
5	1

Diatom Flora of the Low Countries

Remarks



Oude Strijper Aa (NL)
02/06/198

Van Heurck
Types du Synopsis 131

References:

Lange-Bertalot (2001) Diatoms of Europe 2: p. 67, figs p. 324

Hofmann et al. (2011) Diatomeen im Süßwasser-Benthos von Mitteleuropa p. 400, figs p. 662