

Diatom Flora of the Low Countries

***Achnantheidium delmontii* F. Pérès, R. Le Cohu et A. Barthès 2012**

Morphology

Valves linear with rounded apices becoming elliptical in small individuals. RV: axial area narrow, central area irregular forming generally a rectangular fascia but a shortened stria can be present on one of the margin sides. Raphe filiform, straight, with distinct central pores. Striae are slightly radial. RLV: axial area needle-shaped. Striae are parallel to slightly radiate at the apices; mostly two striae are slightly more spaced apart in the middle part of the valve.

Morphometrics

Source	Length (µm)	Width (µm)	Striae (in 10 µm)	
			RV	RLV
Own data (n=9)	14-21	4.1-4.8	20-24	18-21
Pérès, F. et al. 2012	7.3-21.4	3.3-5.1	20-26 up to 35 at apices	18-22 up to 25 at apices

Related species

Achnantheidium pfisteri Lange–Bertalot (shorter 7-12 µm, lower striae density on RV 18-20 in 10 µm, central area is asymmetrical); *A. pyrenaicum* (F. Hustedt) H. Kobayasi (central area is asymmetrical with often a stria on one side, narrower 2.9-4.9 µm)

Distribution

Several rivers in France, Danub Hungary. Rijn Lobith ponton, Maas Stevensweert aanlegsteiger, Hollandse IJssel Gouderak (NL).

Ecology

Invasive species from eutrophic, alkaline rivers.

Ecological values

Indicator values (Van Dam et al. 1994)

R	H	N	O	S	T	M
5	3				5	

IPS
(Cemagref 1982)

IPS-S	IPS-V
4	1

Rott et al. 1997, 1999

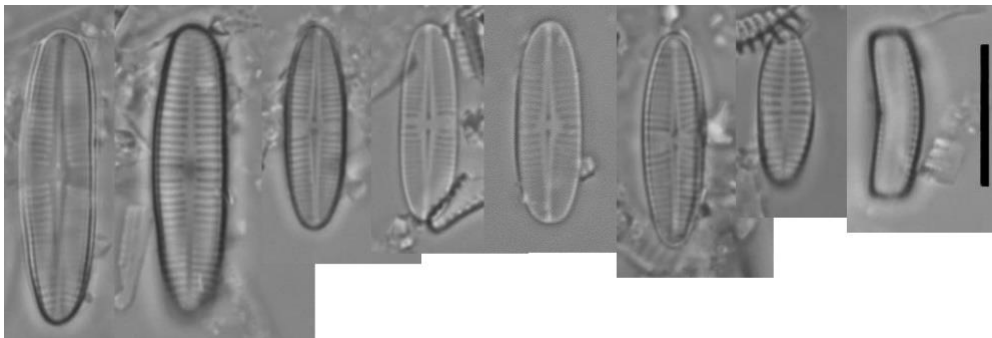
Rott SI s	Rott SI v	Rott TI s	Rott TI v

TDI
(Kelly & Whitton 1995)

TI-S	TI-V

Diatom Flora of the Low Countries

Remarks



The Netherlands

References:

Lange-Bertalot, H., G. Hofmann, M. Werum & M. Cantonati (2017) Freshwater Benthic Diatoms of Central Europe.

Pérès, F., A. Barthès, E. Ponton, M. Coste, L. Ten-Hage and R. Le-Cohu (2012) *Achnantheidium delmontii* sp. nov., a new species from French rivers.

Citation:

Mertens A. (2023) *Achnantheidium delmontii*. In Diatom Flora of the Low Countries. NVKD. Retrieved from <http://www.nvkd-diatom.nl/species>