

# Diatom Flora of the Low Countries

## *Caloneis amphisbaena* (J.-B.G.M. Bory de Saint-Vincent ) P.T. Cleve 1894.

*Synonym: Navicula amphisbaena* Bory

### **Morphology**

Valves broadly elliptic-lanceolate with subcapitate ends. Raphe almost straight, external central endings bent to one side, distant, expanded; apical endings curved to one side. Axial area at apices narrow, towards middle widening; central area large, rhombic-lanceolate. Striae radiate in the middle, becoming parallel to convergent towards the apices.

### **Morphometrics**

Source	Length (µm)	Width (µm)	Striae (in 10 µm)
Own data (n=0)			
Lange-Bertalot et al. 2017	36-80	20-30	15-18
Witkowski et al. 2000	36-80	20-30	15-18

### **Related species**

*Caloneis latiuscula* (Kützing) Cleve (outline and shape of central area); *C. permagna* (Bailey) Cleve (larger: length 85-220 µm, width 35-55 µm)

### **Distribution**

Breugelse Beek, Kleine Dommel, Poldersloten, Zouteveense polder, Vechtplassen (NL).

### **Ecology**

In electrolyte rich and salinized running waters.

### **Ecological values**

Indicator values (Van Dam et al. 1994)

R	H	N	O	S	T	M
4	3	2	3	3	5	3

IPS  
(Cemagref 1982)

IPS-S	IPS-V
2	3

Rott et al. 1997, 1999

Rott SI s	Rott SI v	Rott TI s	Rott TI v
2.3	3	3.9	2

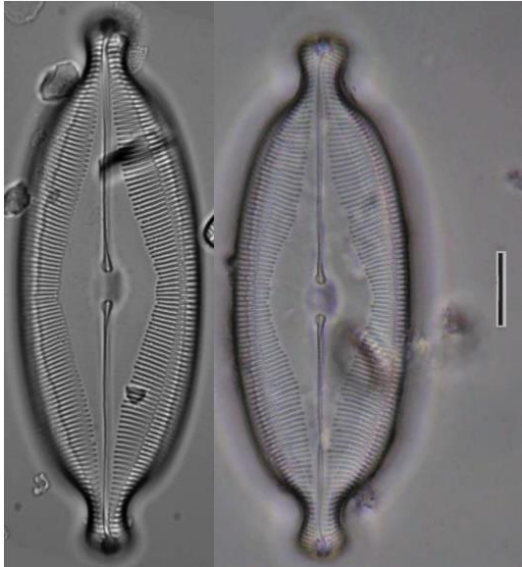
TDI  
(Kelly & Whitton 1995)

TI-S	TI-V
3	1

## Diatom Flora of the Low Countries

---

### Remarks



The Netherlands

### References:

Lange-Bertalot, H., G. Hofmann, M. Werum & M. Cantonati (2017) Freshwater Benthic Diatoms of Central Europe.

Witkowski, A., H. Lange-Bertalot & D. Metzeltin (2000) Diatom Flora of Marine Coasts 1. Iconographia Diatomologica 7. Gantner Verlag Ruggell. 925 p.

### Citation:

Mertens A. (2023) *Caloneis amphisbaena*. In Diatom Flora of the Low Countries. NVKD. Retrieved from <http://www.nvkd-diatom.nl/species>