

# Diatom Flora of the Low Countries

---

## *Placoneis nanoclementis* H. Lange-Bertalot et A.Z. Wojtal 2014.

### **Morphology**

Valves broadly elliptical-lanceolate to elliptical, ends abruptly protracted rather broadly subrostrate to rostrate. Raphe filiform, almost straight with distinctly expanded central pores, not clearly deflected to any side. Raphe fissures shortly curved to apparently opposite sides. Axial area narrow, very slightly expanded proximally. Central area more or less extended transapically, ca. ½ of the valve width, variable in shape due to 3–4 irregularly shortened striae on either side. Other striae radiate throughout becoming more strongly radiate to the ends. Areolae not discernible. Regularly there are two apically orientated stigmoids at one side in the central area.

### **Morphometrics**

Source	Length (µm)	Width (µm)	Striae (in 10 µm)	Areolae (in 10 µm)
Own data (n=)				
Lange-Bertalot & Wojtal 2014	14-23	8.0-8.6	12-13 to 14-16 at ends	

### **Related species**

*Placoneis abundans* Metzeltin & Lange-Bertalot (larger size dimensions on average, 24–31 µm long, 8.7–11.7 µm broad.); *Placoneis parvapolonica* Lange-Bertalot & Wojtal (striae are evenly spaced in the main body of the valve, becoming continually slightly denser near the ends, also denser spaced 14-15 in 10 µm)

### **Distribution**

Bosbeek, Blauwputtenloop, Grote Astbeek (B); Haringvliet-Oost, Beekbergerwoud (NL).

### **Ecology**

Alkaline, eutrophic, β-meso saprobic waters with moderately high conductivity.

### **Ecological values**

Indicator values (Van Dam et al. 1994)

R	H	N	O	S	T	M
4	3			2	5	

IPS  
(Cemagref 1982)

IPS-S	IPS-V

Rott et al. 1997, 1999

Rott SI s	Rott SI v	Rott TI s	Rott TI v
		2.5	2

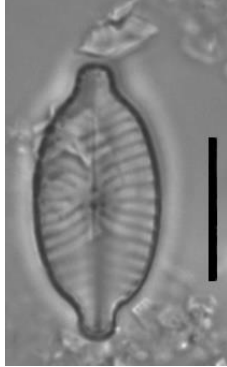
TDI  
(Kelly & Whitton 1995)

TI-S	TI-V
4	1

## Diatom Flora of the Low Countries

---

### Remarks



The Netherlands

### References:

- Lange-Bertalot, H. & A.Z. Wojtal (2014) Diversity in species complexes of *Placoneis clementis* (Grunow) Cox and *Paraplaconeis placentula* (Ehrenberg) Kulikovskiy, Lange-Bertalot & Metzeltin. *Nova Hedwigia* 143:403–420
- Lange-Bertalot, H., G. Hofmann, M. Werum & M. Cantonati (2017) Freshwater Benthic Diatoms of Central Europe.

### Citation:

Mertens A. (2023) *Placoneis nanoclementis*. In Diatom Flora of the Low Countries. NVKD. Retrieved from <http://www.nvkd-diatom.nl/species>